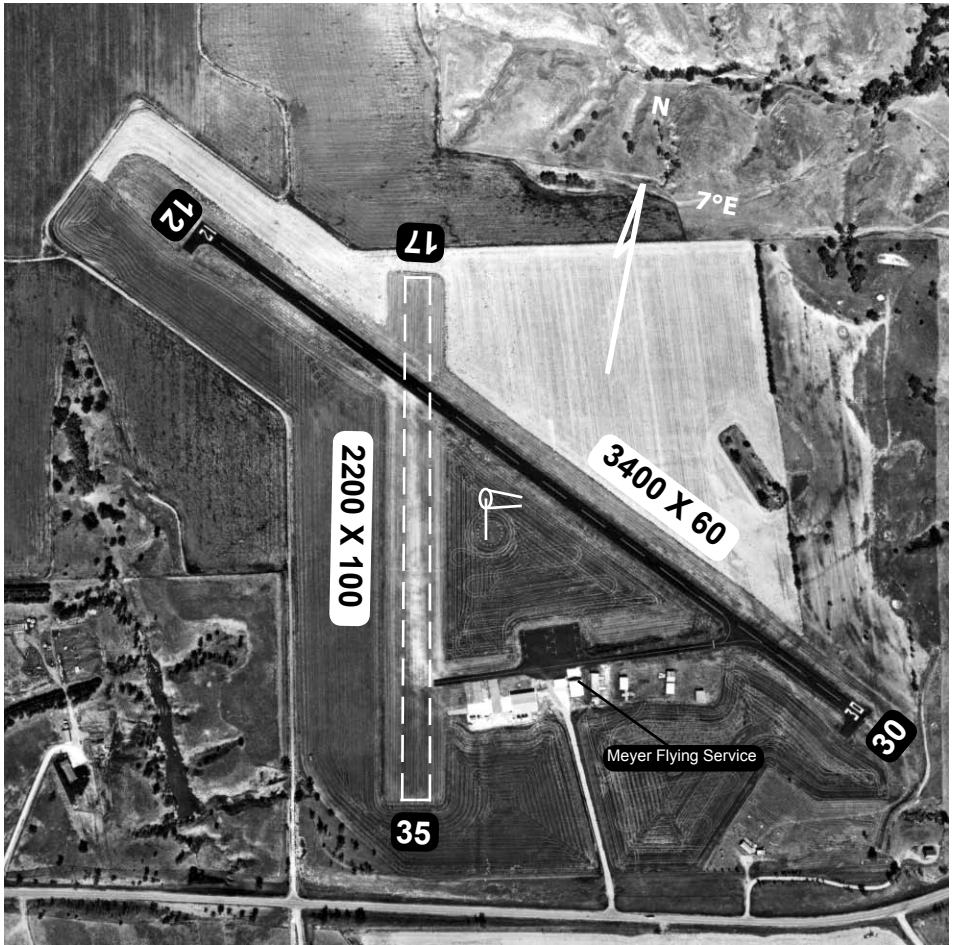


# Curtis (47V)

Elevation 2676'

AWOS/ASOS		CTAF
None		122.9 <b>L</b>



Runway	Surface	Traffic Pattern	Runway Lights
12 / 30	Asphalt	1000-LH / 1000-LH	MIRL <b>L</b> 122.9
17 / 35	Turf	1000-LH / 1000-LH	None
<b>Airport Manager</b>	Tom Brown		308-367-8772
<b>FBO</b>	Meyer Flying Service		308-367-4311
<b>Fuel</b>	100 LL	<b>Hours</b>	0800 - 1700 M - F / May - Sept

Curtis Municipal Airport

N 40°38.25 ' W 100 28.28'